

Alexey Bezgodov

The Double Queen's Gambit

A Surprise Weapon for Black

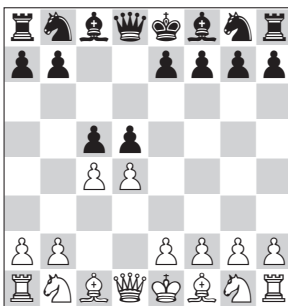
New In Chess 2015

Contents

Explanation of Symbols	6
Introduction	7
Part I – White avoids the main variations	11
Chapter 1 White accepts the gambit	14
Chapter 2 The white bishop comes out	17
Chapter 3 Transposing into the Alapin Variation of the Sicilian	24
Chapter 4 Transposition into the Exchange Variation of the Slav Defence	27
Chapter 5 Transposition into the Panov Attack	37
Part II – Who is tricking whom? 3. ♖f3	49
Chapter 6 The rare symmetrical endgame	51
Chapter 7 The mysterious black queen check	56
Chapter 8 The centralised knights system	66
Part III – The queenless DQG: 3. ♖f3 cxd4 4.cxd5 ♘f6 5. ♙xd4 ♙xd5 6. ♗c3 ♙xd4 7. ♗xd4	97
Chapter 9 7...a6 – Taking control of the square b5	100
Chapter 10 7...♕d7 – The bishop-retention system	129
Chapter 11 7...e5 – The move of the future?	143
Part IV – The Gorbatov Gambit and the imaginary Semi-Tarrasch: 3. ♗c3	155
Chapter 12 A fascinating gambit	157
Chapter 13 The classical 3... ♗f6	163
Part V – The Deferred Capture Variation: 3.cxd5 ♗f6	177
Chapter 14 White takes on c5	179
Chapter 15 The strong 4.e4	187
Chapter 16 An Attempt at Revival	193
Part VI – The main variation: 3.cxd5 ♙xd5	205
Chapter 17 Early divergences	208
Chapter 18 The Queen Retreats 5... ♙d7/5... ♙d8	217
Chapter 19 Minor white moves after 6... ♗f6	223
Chapter 20 The fianchetto 7.g3	233
Part VII – Retro-Training	247
Postscript	278
Bibliography	279
Index of Variations	281
Index of Games	285

Introduction

The Double Queen's Gambit is a name so far unknown to chess players. This is my name for the opening which starts 1.d4 d5 2.c4 c5.



This aggressive thrust with the c-pawn looks very unusual and even somewhat scary. How can it be? Without any preparation, Black, acting as if he thinks he is White, copies the latter's play? This is a breach of classical canons, and of the rules of playing the opening! That is what many would think. However, things are not so simple. Black's attempt to solve his opening problems with this immediate central counterattack has been known for a long time and was used by many classical players, including World Champions. In reality, this sharp attempt has no refutation. In our day, it is played by quite a few grandmasters.

The leading players who have used the opening:

Emanuel Lasker, Max Euwe, Rudolf Spielmann, Vera Menchik, Gyula Breyer, Siebert Tarrasch, Jacques Mieses, Frank Marshall, Carl Schlechter, Georg Marco, Nikola Padevsky, Richard Réti, Pal Benko, Burkhard Malich, Andrija Fuderer, Jeroen Piket, Heikki Westerinen, Arthur Bisguier, Maxim Dlugy, Peter Svidler, Boris de Greiff, Ilmar Starostits, Mikhail Ulbin, Evgeny Gleizerov, Yury Kryvoruchko, Mikhailo Oleksienko, Zsuzsa Polgar, Konstantin Landa, Roman Ovetchkin...

An impressive list, don't you think? It would be premature to describe it as great, but the fact that so many strong players from different epochs have been and are willing to use this apparently risky-looking variation attests to its reliability.

How did the name 'Double Queen's Gambit' come about? Looking through the games in the line, I noticed the remarkable degree of variation in the names used for it. Some sources call it the Queen's Gambit, others the English Opening, and occasionally it is even called the Caro-Kann. And so I took the decision to name it in a way that would not create any confusion.

The Double Queen's Gambit (hereafter referred to as DQG) is characterised by the very early establishment of the pawn quartet c4-c5-d4-d5. Meanwhile, the other pawns remain at home for the time being.

Earlier (and even still today) the opening could arise via the move-order 1.♘f3 ♘f6 2.d4 d5 3.c4 c5 4.cxd5 cxd4. There are many other move-orders. The main one, the most topical and dangerous line for Black to this day, is 1.d4 d5 2.c4 c5 3.cxd5! ♗xd5! 4.♘f3 cxd4 5.♘c3 ♗a5 6.♘xd4 ♘f6 or 6...e5. This is dealt with in Part 6. If the white knight comes to f3 at move 3, or earlier, it seems to me that this helps Black.

In attempting to give due credit to those who have studied this opening before me, I should mention the names of the Austrians, Hans Haberditz (1901-1957) and Hans Müller (1896-1971). Several decades ago, they analysed the line quite thoroughly (in the pre-computer era). The results of their work were published in various articles... in my book, these variations are studied from scratch. Naturally, I do not agree with all of their conclusions. But even so, these authors' contribution to the development of the line is quite considerable, and it is no coincidence that in a number of countries, it is known as the 'Austrian Variation'.

This book is devoted to a very sharp attempt by Black to solve his problems immediately in the closed openings. It is no secret that many players do not like to take on a lengthy defensive task, which can often arise after 1.d2-d4, thanks to the gigantic body of modern theory. Whatever opening Black chooses, in all lines he either faces dangerous tactical lines, or rather passive, cramped positions. In order to play dynamic openings (such as those involving a fianchetto of the king's bishop, for example), he not only has to accept great strategic risk, but also the fact that a highly booked-up opponent may lure Black into a prepared variation. Things can be very difficult for Black! My book sets itself a large and difficult task – to save the black player from lengthy opening suffering, and ensure him a solid, and at the same time quite active position. How did this come about?

A couple of years ago, whilst studying some games from the world blitz and rapid championship, I noticed that the elite GM Shakhriyar Mamedyarov had fearlessly played against strong opponents the line 1.d4 d5 2.c4 c5!?. This was nothing terribly surprising in itself, as the Azeri GM is noted for his fighting and uncompromising style. But what did surprise me was that his results with this line were very good, and his opponents seemed to have no convincing responses to this rather committal opening. I became very interested, studied many of his games, did my own analyses, and eventually decided to publish this book. If the world's top grandmasters could not get any real advantage against this energetic and fighting line, then this must mean that it fully deserves the right to exist. If it is correct (and that is my opinion at this moment), then it closes off practically all of White's chances to get an advantage. There is comparatively little to study. The exceptionally early central conflict leads to a quick exchange of a pair of pawns on each side, on the c- and d-files. This in itself eases the defence. However, White retains an advantage in development. It is not very great, and as happens in many modern openings, Black can extinguish it quite quickly, with accurate defence. The result is a symmetrical and relatively simple position, with no weaknesses and very decent prospects for Black – what more can one ask?

I am convinced that my book can provoke considerable interest from players of all levels, from amateur to grandmaster. The surprise effect is, of course, consid-

erable, but even with good preparation by White, one can oppose him with confidence. I am sure that this system of play will bring many practical successes and much creative satisfaction to those who study this book thoroughly and have the courage to play the line in practice. I will say that I myself play the line constantly, and very few of my opponents (including grandmasters) have achieved any real advantage. Therefore my results as Black have improved. I wish you the same, with all my heart!

Alexey Bezgodov
Khanty-Mansiysk, June 2015

Chapter 12

A fascinating gambit

1.d4 d5 2.c4 c5 3.♘c3 cxd4 4.♙xd4 ♘c6 5.♙xd5 ♕e6!



The gambit 1.d4 d5 2.c4 c5 3.♘c3 cxd4 4.♙xd4 ♘c6 5.♙xd5 ♕e6! is a fascinating and little-studied page in modern opening theory. I am convinced that in the near future, there will be a lot of precious new discoveries and important, fascinating games played in this line. The reason I am so certain is that both sides' play is logical and principled. With his third move, White increases the pressure on the centre, in reply to which Black employs a combinational method of creating counterplay.

Psychologically, Black's position is somewhat easier to play. He makes active developing moves, which he knows well. White, on the other hand (especially in the highly likely case that before the game, he did not even suspect the existence of this variation), must make his decisions in a very complicated and dynamic position.

Game 66

Jorden van Foreest 2172

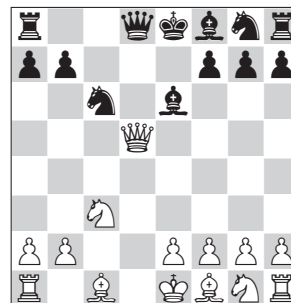
Mikhail Ulibin 2515

Ortisei 2012 (3)

1.d4 d5 2.c4 c5 3.♘c3 cxd4 4.♙xd4 ♘c6 5.♙xd5 ♕e6!

Black's play reminds one of the well-known variation of the Von Hennig-Schara Gambit: 1.d4 d5 2.c4 e6 3.♘c3 c5 4.cxd5 cxd4 5.♙xd4 ♘c6 6.♙d1 exd5 7.♙xd5 ♕e6.

(position in diagram)



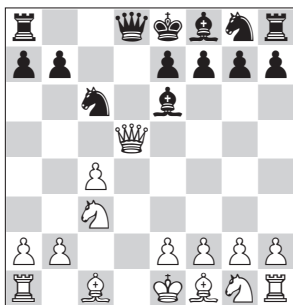
The main difference is that here, we still have pawns on c4 and e7. It is very

hard to say who this favours. There is no doubt that Black has counter-play, and that this gambit is less well-analysed than the Von Hennig-Schara. I have named this the Gorbatov Gambit, in honour of the player who played it first (see the next game).

The mysterious 5...♙d7 has not so far been tested in practice. In my opinion, White can retain his extra pawn and the better chances, with very accurate play. Black is far from helpless, as can be shown with the variation 6.♘f3 ♘f6 7.♙d3 ♙g4 8.a3 ♙xd3 9.exd3 ♙xf3 10.gxf3 ♘d4 11.♙d1 ♘b3 12.♙b1 ♘xc1 13.♙xc1 ♙d8 with good chances of a draw.

I suggest 6.e3 ♘f6 7.♙d1 (probably, this modest square is the best for the queen, because here, it is harder to attack) 7...♙f5 8.♙e2 ♘e4 9.♘xe4 ♙xe4 10.♘f3 ♙xd1+ 11.♙xd1 (White has an extra pawn, and Black cannot win it back) 11...e6 12.♙d2 ♙e7 13.♙c3 ♙f6 14.♙c1 ♙e7 15.♙e2 ♙ad8 16.♙a4 ♙d3+ 17.♙e1 ♙c8 18.b3 ♙xc3+ 19.♙xc3 ♙e4 20.a3±.

We return to the game.



6. ♙xd8+

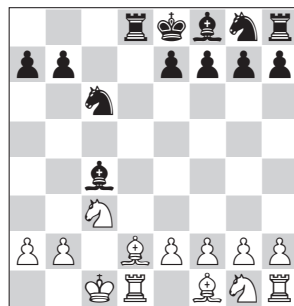
This leads to equality. In the following game, we examine the stronger move 6.♙b5!.

6...♙xd8 7.♙d2

7.e4? ♘b4 is suicide.

7...♙xc4 8.0-0

There is an option with Catalan motifs: 8.g3 e5 9.♙c1 ♘f6 10.♙g2 ♘d5 11.a3 f6 12.♙e4 ♙f7 13.♘f3 ♘xc3 14.♙xc3 ♙d5=.



8...g6

Black tries to complicate the game. Such a strategy can lead to problems. Simpler is 8...e6=.

I would prefer the centralising 8...e5 9.♘f3 ♘f6 with a completely equal (though not drawn) game. Both sides can hope for more than a draw.

9.♘f3 ♙g7 10.e4 ♙xf1 11.♙hxf1 ♘f6 12.h3 0-0 13.♙e3 ♘d7 14.♙c2

14.♘d4 ♙xd4 15.♙xd4 f6= is also possible.

14...♘b6

A move associated with risk – the pawn on b6 (after the exchange) can conveniently be attacked by White.

It was worth considering the exchange 14...♙xc3 15.♙xc3 ♘f6 16.♙xd8 ♙xd8 17.♘d2 b6 18.f4 ♙c8 19.g4=.

15.♙xb6 axb6 16.a3

If he wishes, White can ensure himself safety with 16.♙xd8 ♙xd8 17.♙d1 ♘b4+ 18.♙b3 ♘d3 19.♙c2 ♘b4+ 20.♙b3=.

16...f5

Perhaps White underestimated this advance. However, even after it, Black

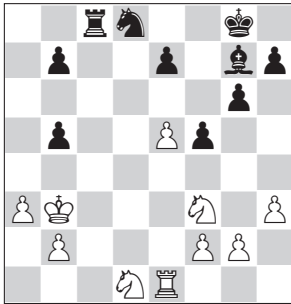
cannot hope for more than an equal game.

17. ♖fe1

Exchanges are harmless: 17.exf5 gxf5 18.♙xd8 ♗xd8 19.♙d1 ♗xd1 20.♘xd1 ♖f7=.

17... ♗xd1 18. ♘xd1 b5 19. ♖b3 ♖c8 20.e5 ♘d8?!

Very dangerous for Black. He retains fully-fledged play after 20...♙d8 21.♘c3 g5! 22.♘xg5 ♙d2∞.



21. ♘c3

The start of a series of inaccuracies by White, after which his position deteriorates markedly.

It is hard to say what Black intended after the aggressive 21.♖b4. White can not only take the pawn, but also make his king into a very strong piece.

21... ♗c5 22. ♙d1

He retains some advantage after 22.♖c2 ♘e6 23.b4! ♗c8 24.♙d1 g5 25.♖b3 g4 26.♘h4 ♙xe5 27.♘xb5 gxh3 28.gxh3±.

22... ♘c6 23. ♙d1

After the solid 23.♙d5 ♗xd5 24.♘xd5 ♘xe5 25.♘xe5 ♙xe5 26.♘xe7+ ♖f7 27.♘d5 ♖e6 28.♘c3 ♙xc3 29.♖xc3 ♖d5 30.♖b4 ♖c6, Black should make a draw.

23... ♙xe5 24. ♘xe5 ♗xe5 25.f4

White could still fight for survival with 25.♙d5.

25... ♗e3 26. ♖c2 b4 27.axb4?!

It was essential to try 27.♘d5 ♗e2+ 28.♖d3 ♗xb2 29.axb4 b5 30.♖c3! ♗xg2 31.♗c7, and the battle would continue.

27... ♘xb4+ 28. ♖d2 ♗g3 29. ♗xb7 ♗xg2+ 30. ♖e3 ♗xb2 31. ♗a7 ♗h2 32. ♗c7 ♗xh3+

White loses a third pawn.

33. ♖d4 ♖f7 34. ♗c4 ♘c2+ 35. ♖c5 ♘a3 36. ♖d4 0-1

Game 67

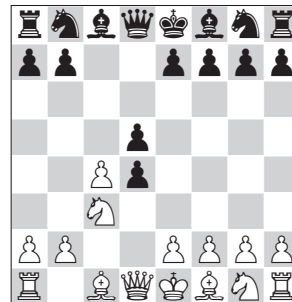
Irina Umanskaya 2295
Alexey Gorbatov 2415

Moscow 1996 (9)

1.d4 d5 2.c4 c5 3. ♘c3 cxd4

More solid and not involving a pawn sacrifice is 3...♘f6, considered in the following Chapter 13.

3...e6 4.cxd5 exd5 transposes into the classical Tarrasch Defence (4...cxd4 is a Von Hennig-Schara Gambit).



4. ♗xd4 ♘c6 5. ♗xd5 ♙e6! 6. ♗b5!

Otherwise White has no chances of an advantage at all. Although the queen is strangely placed on b5 and can be attacked, Black is still far away from equality.

Weaker is 6.♗xd8+ ♗xd8, and in view of the threat of ...♘b4, White has no time to save the c4-pawn. This means that Black has solved his opening

problems at least. This was discussed at length in the previous game.

Completely wrong is 6. ♖c5?? ♘d4--+.

6...a6!

An ingenious intermediate move. Taking on b7 is dangerous for White, and so Black wins some time for development.

I will admit that I wanted to leave the white queen on b5, so Black has the option of attacking it later instead. Therefore, I studied the immediate 6...g6. However, this is too responsible an action for Black to get away with unpunished: 7. ♙f4 ♙g7 (7... ♙h6 8. ♚d1!) 8. ♘d5 ♚c8 9. ♙d1, and Black has nothing good to look forward to.

7. ♖a4

Taking on b7 is not as hopeless for White as a quick glance might suggest: 7. ♖xb7 ♘d4 8. ♘d5!.



analysis diagram

The attack on c7 gives White saving chances. 8... ♙xd5 (White is also facing dangers after 8... ♘c2+ 9. ♙d1 ♚c8 10. ♚b1 ♘f6 11. ♙d2 ♙xd5 12. cxd5 ♘e4 13. ♘h3 ♘c5 14. ♙a5 ♘xb7 15. ♙xd8 ♙xd8 16. e3 ♘b4 17. e4 ♘xa2 18. ♙xa6 ♙c7 19. ♘g5 ♚g8 20. ♘xf7 ♚a8 21. ♙xb7 ♙xb7 22. h4, but maybe he is saving himself) 9. cxd5 ♘f6 10. ♙d1 ♚b8 11. ♖xa6 ♖xd5 12. ♖a4+ ♙d8 13. e4 ♘xe4 14. ♙c4 ♖e5 15. ♘h3 e6 16. ♙f4

♘xf2+ 17. ♘xf2 ♖xf4 18. ♖a5+ ♙e7 (18... ♖c7 also gives a slightly better endgame) 19. ♖a7+ ♙f6 20. ♙d3 ♚d8 21. ♚f1 ♘f5 22. ♙c2 ♖d4 23. ♖xd4+ ♘xd4+ 24. ♙b1 g6±.



7...g6

Having looked at other plans, I can say with confidence that Gorbatov made the best choice.

8.e3

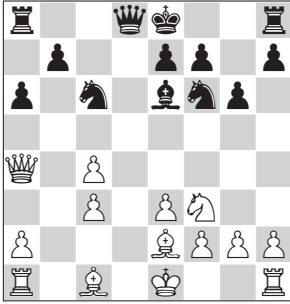
After 8.e4 ♙g7 Black, as in the game, has good piece counterplay, along the lines of the King's Indian, Modern Benoni and Benko Gambits. His further play, depending on circumstances, can be associated with an exchange on c3 and play against the weak queenside pawns (as in this game), or the preparation of ...b7-b5, activating his forces to the maximum.

8... ♙g7 9. ♘f3 ♙xc3+

In previous times, when analysts paid great attention to 'general considerations', such an exchange would have seemed strange. However, the possibility of playing against the chronically weak queenside pawns is at least as important as the strong bishop, although, of course, the bishop could have been retained.

The simple 9... ♘f6 10. ♙e2 0-0 is also good.

10. bxc3 ♘f6 11. ♙e2



11... ♖a5

Slightly worse is 11... ♗e4 12. ♖c2 ♖a5 13. ♗d4 ♗xd4 14. exd4 ♖xc3+ 15. ♖xc3 ♗xc3 16. ♖f1 0-0 17. ♖a3 ♖fe8 18. ♖c1 ♗a4 19. ♖e2±.

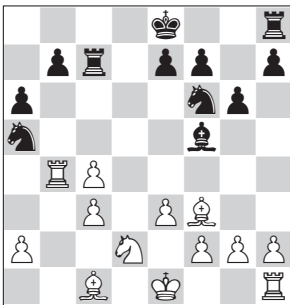
12. ♖xa5 ♗xa5 13. ♗d2 ♖c8 14. ♖b1 ♖f5

Black's possibilities are surprisingly extensive and various. Here are a couple of other variations:

A) 14... ♗d7 15. f4 b6 16. ♖b4 ♗c6 17. ♖a4 (17. ♖b1 ♗a5=) 17... ♗c5 18. ♖a3 ♗a5 19. ♗b3 ♗ab7 20. 0-0 0-0 21. ♖d1 a5∞;

B) 14... 0-0 15. ♖a3 ♖fe8 16. 0-0 ♗f8 17. ♖b4 ♖ed8 18. ♗b3 ♗xc4 19. ♖xc4 ♖xc4 20. ♖xb7 ♖e8 21. ♖b4 ♗d5=.

15. ♖b4 ♖c7 16. ♖f3



16... ♖d3?!

Everything is fully in order for Black after 16... 0-0 17. 0-0 ♖d3 18. ♖d1 ♖c2 19. ♖f1 ♗d7!? (avoiding the repetition

of moves) 20. ♖a3 ♗e5 21. c5 ♗xf3+ 22. ♗xf3 ♖d3 23. ♖c1 ♗c4 24. ♗e1 ♖e2=.

17. ♗b3

Black had clearly underestimated this move.

17... ♗c6

Black faces a long search for the draw in the variation 17... ♗xc4 18. ♖xb7 ♖xb7 19. ♖xb7 ♖e4 20. ♖xe4 ♗xe4 21. ♗e2±.

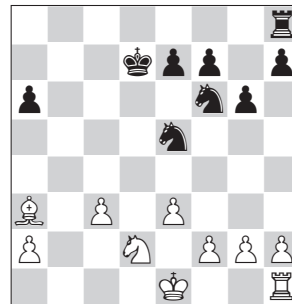
18. ♖xb7 ♗d8?!

Objectively stronger is 18... ♖xb7 19. ♖xc6+ ♖d7 20. ♗c5 ♖xc4 21. ♗xd7 ♗xd7 22. ♖a3±.

19. ♖b6

Black would be placed on the verge of defeat after 19. ♖xc6 ♖xc6 20. ♖a3 ♖e8 21. ♗a5 ♖c7 22. ♗d2 ♖xb7 23. ♗xb7+ ♗c8 24. ♗xd3 ♗xb7 25. ♖d1± with very well-founded chances of winning.

19... ♗e5 20. ♖e2 ♖xc4 21. ♖xc4 ♗xc4 22. ♖b8+ ♖c8 23. ♖xc8+ ♗xc8 24. ♗d2 ♗e5 25. ♖a3 ♗d7



26. 0-0?!

Very late castling is not the best decision, and deprives White of any real advantage. The king was needed in the centre to support the valuable pawn on c3.

Things would not be so easy for Black after 26. f4 ♗eg4 27. ♗e2 ♗d5 28. ♖c1±.

26... ♖c8 27. ♖d1 ♗e6

Black also had at his disposal 27... ♗e8!?

28. ♖b3

28. ♖b4 ♜d8 29. ♗f1 ♘e4 30. ♗e2 ♘xd2 31. ♜xd2 ♜c8 with sufficient compensation for the pawn to maintain equality.

28... ♘e4 29. ♘d4+ ♗f6 30. ♘e2

30. ♖b4=.

30... ♘c4

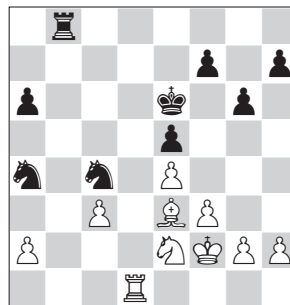
Black would also have a noticeable advantage after 30... ♘xc3 31. ♘xc3 ♜xc3 32. ♖b2 ♜c2.

31. ♖c1

The rook could show its energy after 31. ♜d4! ♘xa3 32. ♜xe4=.

31... e5 32. f3 ♘c5 33. e4 ♜b8 34. ♗f2 ♗e6 35. ♖e3 ♘a4

The activity of the black pieces has grown. White fails to withstand the tension.



36. f4?

The position could be held with 36. ♖c1! ♜b1 37. ♜d8 with sufficient play not to have to worry about losing.

36... ♜b2

But now White is certainly in a bad way.

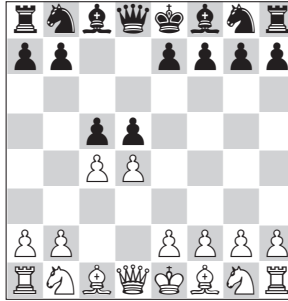
37. ♖c1 ♜xa2 38. fxe5 ♘xc3 39. ♜e1 ♘xe5 40. ♗e3 ♘g4+ 0-1

Conclusion

The gambit 3. ♘c3 cxd4 4. ♜xd4 ♘c6 leads to sharp and dynamic positions, and is good against theoreticians, who may regret not having devoted time to the variation. From a purely chess point of view also, the gambit is perfectly good and worthy of greater attention than it has received in contemporary practice.

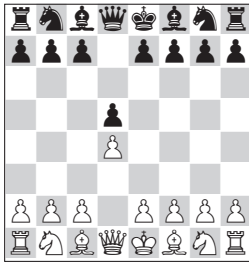
Index of Variations

1.d4 d5 2.c4 c5



White avoids the main variations:

1.d4 d5



2. ♘f3 c5 3. dxc5	14
2. ♙g5 c5	17
2. ♙f4 c5 3. ♘f3	19
3. e3	21
2. c4 c5 3. cxd5 ♜xd5 4. e3 cxd4 5. exd4 e5 ...	25
2. c4 c6 3. ♘f3 ♘f6 4. cxd5 cxd5 5. ♘c3 ♘c6	
6. ♙f4 e6 7. e3 ♙d6 8. ♙g3	27
8. ♘e5	28
8. ♙d3 ♙xf4 9. exf4 ♙d7	30
9... ♜b6 10. 0-0	31
10. a3	33
8. ♙xd6	34

2.c4 c5 3.e3 cxd4 4.exd4 ♘f6 5. ♘c3 ♘c6



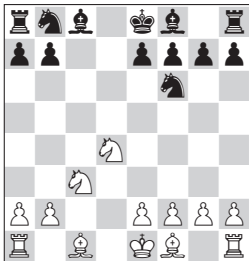
6. ♘f3 ♙g4 7. cxd5 ♘xd5 8. ♜b3 ♙xf3	
9. gxf3 e6 10. ♜xb7 ♘xd4 11. ♙b5+	
♘xb5 12. ♜c6+ ♘e7 13. ♜xb5 ♜d7	
14. ♘xd5+ ♜xd5 15. ♜e2	38
15. ♙g5+	39
6. ♙g5 dxc4	
7. d5 ♘e5 8. ♜d4 h6 9. ♙f4 ♘g6 10. ♙xc4 ..	41
9. ♙h4 ♘g6 10. ♙g3	42
7. ♘f3	44
7. ♙xc4 h6 8. ♙xf6	45
8. ♙h4	45

1.d4 d5 2.c4 c5 3.♘f3



3...cxd4 4.♙xd4 ♘c6 5.♙xd5 ♙xd5 6.cxd5	
♘b4 7.♘d4.....	51
7.♘a3.....	54
4.cxd5 ♙a5+ 5.b4.....	56
5.♙d2 ♙xd5 6.e3.....	57
6.♘c3 ♙a5 7.♘xd4 e5.....	57
7...♘f6.....	58
3...cxd4 4.cxd5 ♘f6 5.♘xd4 ♘xd5 6.a3.....	66
6.♘b5.....	68
6.g3.....	69
6.e4 ♘f6 7.♙b5+.....	71
7.e5.....	73
7.♘c3.....	78
6...♘b4 7.♙a4+.....	82
7.♙b5+.....	87
7.♙e3.....	88

1.d4 d5 2.c4 c5 3.♘f3 cxd4 4.cxd5 ♘f6 5.♙xd4 ♙xd5 6.♘c3 ♙xd4 7.♘xd4



7...a6 8.e4 e5 9.♘b3.....	100
9.♘c2.....	102
8.♙g5 ♙d7.....	104
8...e5.....	106
8.♙f4.....	108
8.g3 e5 9.♘c2.....	108
9.♘b3 ♘c6	
9...♙d7.....	116
7...♙d7 8.e4.....	129
8.♙g5.....	132
8.g3.....	133
8.♙f4.....	135
8.♘db5 ♙d8 9.♙f4.....	136
9.♙e3.....	138
7...e5 8.♘db5 ♘a6 9.e3.....	144
9.e4.....	144
9.♙g5.....	147
9.g3.....	151

1.d4 d5 2.c4 c5 3.♘c3



3...cxd4 4.♙xd4 ♘c6 5.♙xd5 ♙e6 6.♙xd8+	159
6.♙b5	160
3...♘f6 4.♘f3	165
4.♙g5	166
4.dxc5	167
4.cxd5 ♘xd5 5.dxc5	168
5.e4	169
5.♘f3 ♘xc3 6.bxc3 cxd4 7.cxd4 e5	
8.dxe5	172
8.e3 exd4	174
8...♙b4+	175
8.e4	176

1.d4 d5 2.c4 c5 3.cxd5 ♘f6



4.dxc5 ♙xd5 5.♙d2	179
5.♙xd5 ♘xd5 6.a3	180
6.♙d2	182
6.e4 ♘b4 7.♘a3 e5 8.♘f3 f6	
9.♙d2 ♘8c6	183
9...♘8a6	185
4.e4 ♘xe4 5.dxc5 ♘xc5 6.♘c3	187
6.♘f3	190
5...♙a5+ 6.♙d2 ♘xd2 7.♙xd2 ♙xd2+	
8.♘xd2 g6 9.♙b5+	192
9.♘gf3	192
9.0-0-0	192
9.♙c1	192
9.b4	201
7...♙xc5	197
7.♘xd2	195
6.♘c3	193
6.♘d2	193

1.d4 d5 2.c4 c5 3.cxd5 ♖xd5



4. ♘c3	207
4. e3	208
4. ♘f3 cxd4 5. ♘c3 ♖a5 6. ♖xd4	211
6. ♘xd4 e5	214
6... ♘f6 7. ♙f4	221
7. ♖d3	222
7. ♘b3 ♖c7 8. ♙g5	225
8. e4	227
7. ♙d2	229
7. g3 ♘e4	232
7... e5 8. ♘b3	234
8. ♘b5	237
5... ♖d8 6. ♘xd4	216
6. ♖xd4	217
5... ♖d7 6. ♘xd4	219
6. ♖xd4	219